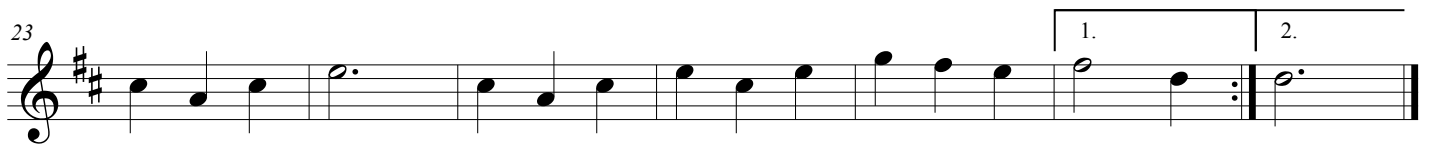
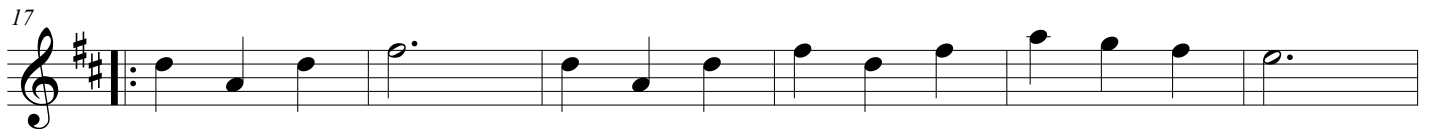
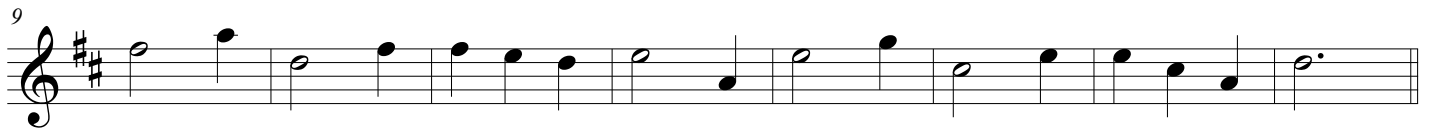


REPERTOIRE D'ARSENE COURTY

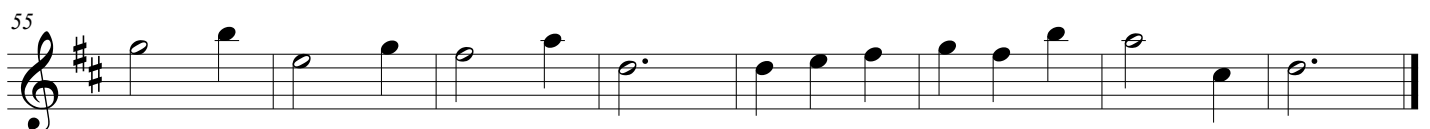
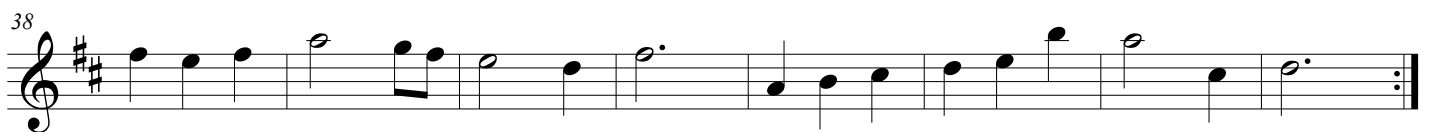
Violoneux à Bosroger (Creuse)

2) Valses

VALSE 1



VALSE 2



REPERTOIRE D'ARSENE COURTY

Violoneux à Bosroger (Creuse)

2) Valses (suite)

VALSE 3

63

72

80

Detailed description: This block contains the musical notation for Valse 3, measures 63 through 87. It consists of three staves of music in treble clef with a key signature of two sharps (F# and C#). The first staff (measures 63-71) begins with a repeat sign and contains a sequence of eighth and quarter notes. The second staff (measures 72-79) continues the melody with similar rhythmic patterns. The third staff (measures 80-87) concludes the piece with a final cadence.

VALSE 4

88

96

104

112

Detailed description: This block contains the musical notation for Valse 4, measures 88 through 119. It consists of four staves of music in treble clef with a key signature of two sharps (F# and C#). The first staff (measures 88-95) starts with a repeat sign and features a mix of eighth and quarter notes. The second staff (measures 96-103) continues the melody. The third staff (measures 104-111) shows a continuation of the rhythmic and melodic patterns. The fourth staff (measures 112-119) ends with a final cadence.

REPERTOIRE D'ARSENE COURTY

Violoneux à Bosroger (Creuse)

2) Valses (suite)

VALSE 5

Musical notation for Valse 5, measures 120-145. The score consists of four staves of music in treble clef with a key signature of two sharps (F# and C#). The first staff starts at measure 120 and ends at 127. The second staff starts at measure 128 and ends at 135. The third staff starts at measure 136 and ends at 144. The fourth staff starts at measure 145 and ends with a double bar line.

VALSE 6

Musical notation for Valse 6, measures 153-193. The score consists of six staves of music in treble clef with a key signature of two sharps (F# and C#). The first staff starts at measure 153 and ends at 161. The second staff starts at measure 162 and ends at 168. The third staff starts at measure 169 and ends at 176. The fourth staff starts at measure 177 and ends at 184. The fifth staff starts at measure 185 and ends at 192. The sixth staff starts at measure 193 and ends with a double bar line.

REPERTOIRE D'ARSENE COURTY

Violoneux à Bosroger (Creuse)

2) Valses (suite)

VALSE 7

200

208

216

224

232

1. 2.

VALSE 8

242

251

259

REPERTOIRE D'ARSENE COURTY

Violoneux à Bosroger (Creuse)

2) Valses (suite)

VALSE 9 (= La passagère)

268

276

284

291

299

308

317

1. 2.

REPERTOIRE D'ARSENE COURTY**Violoneux à Bosroger (Creuse)****2) Valses (suite)****VALSE 10**

Musical score for Valse 10, measures 325-351. The score is written in treble clef with a key signature of one sharp (F#) and a common time signature (C). The music consists of four staves of notation. The first staff (measures 325-333) features a melody of quarter and eighth notes. The second staff (measures 334-342) continues the melody with similar rhythmic patterns. The third staff (measures 343-350) introduces a more complex rhythmic pattern with sixteenth notes. The fourth staff (measures 351) concludes the piece with a final note and a double bar line.