

Airs de "LA BOURRÉE PARISIENNE - DANSE NOUVELLE" pour piano par Jorge Lafforgue-Beranek - 1903

1



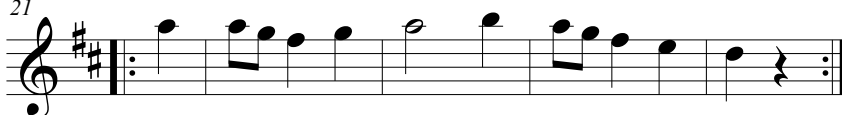
9



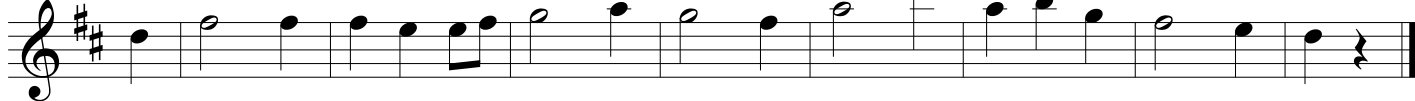
13



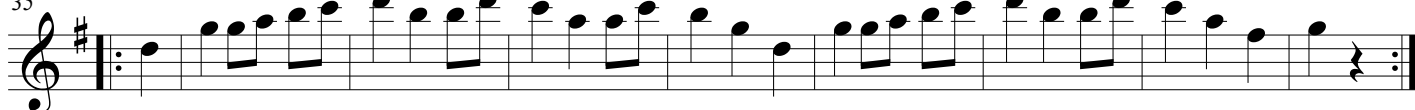
2



26



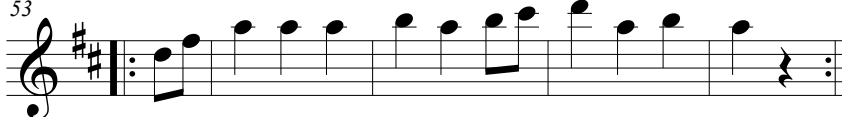
3



44



4



58



Airs de "LA BOURRÉE PARISIENNE"

par J. Lafforgue-Beranek - 1903 (suite et fin)

5

67

76

Musical notation for measures 67-84, featuring a treble clef, a key signature of one sharp (F#), and a 2/4 time signature. The music consists of two staves of notes, primarily quarter and eighth notes, with some triplet markings.

85

transition

Musical notation for measures 85-89, featuring a treble clef, a key signature of one sharp (F#), and a 2/4 time signature. The music consists of a single staff of notes, primarily quarter and eighth notes, with some triplet markings. The word "transition" is written below the staff.

6

90

Musical notation for measures 90-93, featuring a treble clef, a key signature of one sharp (F#), and a 2/4 time signature. The music consists of a single staff of notes, primarily quarter and eighth notes, with a triplet marking.

94

Musical notation for measures 94-101, featuring a treble clef, a key signature of one sharp (F#), and a 2/4 time signature. The music consists of a single staff of notes, primarily quarter and eighth notes, with some triplet markings.

7

102

Musical notation for measures 102-110, featuring a treble clef, a key signature of one sharp (F#), and a 2/4 time signature. The music consists of a single staff of notes, primarily quarter and eighth notes, with some triplet markings.

111

Musical notation for measures 111-118, featuring a treble clef, a key signature of one sharp (F#), and a 2/4 time signature. The music consists of a single staff of notes, primarily quarter and eighth notes, with triplet markings.

8

119

Musical notation for measures 119-127, featuring a treble clef, a key signature of one flat (Bb), and a 2/4 time signature. The music consists of a single staff of notes, primarily quarter and eighth notes, with first and second endings marked.

128

Musical notation for measures 128-135, featuring a treble clef, a key signature of one flat (Bb), and a 2/4 time signature. The music consists of a single staff of notes, primarily quarter and eighth notes, with some triplet markings.