

BOURRÉES provenant de cahiers manuscrits trouvés à Combronde  
(datables des années 1920, coll. Éric Coatrieux)

1

*Bourrée 1 (cahier 1 page 1)*

Musical notation for Bourrée 1, consisting of two staves in 3/4 time. The key signature has one sharp (F#). The melody is on the upper staff, and the accompaniment is on the lower staff. The piece ends with a double bar line and repeat dots.

*Bourrée 2 (cahier 1 page 1)*

Musical notation for Bourrée 2, consisting of two staves in 3/4 time. The key signature has one sharp (F#). The melody is on the upper staff, and the accompaniment is on the lower staff. The piece ends with a double bar line and repeat dots.

*Bourrée 3 (cahier 1 page 1) Sib probable à la clef*

Musical notation for Bourrée 3, consisting of two staves in 3/4 time. The key signature has one sharp (F#). The melody is on the upper staff, and the accompaniment is on the lower staff. The piece ends with a double bar line and repeat dots.

*Bourrée 4 (cahier 1 page 2)*

Musical notation for Bourrée 4, consisting of two staves in 3/4 time. The key signature has one flat (Bb). The melody is on the upper staff, and the accompaniment is on the lower staff. The piece ends with a double bar line and repeat dots. There are first and second endings marked with '1' and '2' above the notes.

*Bourrée 5 (cahier 1 page 2) Sib probable à la clef*

Musical notation for Bourrée 5, consisting of two staves in 3/4 time. The key signature has one sharp (F#). The melody is on the upper staff, and the accompaniment is on the lower staff. The piece ends with a double bar line and repeat dots.

*Bourrée 6 (cahier 1 page 2)*

Musical notation for Bourrée 6, consisting of two staves in 3/4 time. The key signature has one flat (Bb). The melody is on the upper staff, and the accompaniment is on the lower staff. The piece ends with a double bar line and repeat dots.

*Bourrée 7 (cahier 1 page 3)*

Musical score for Bourrée 7, consisting of two staves of music in 3/4 time. The first staff is in treble clef and the second in bass clef. The key signature has one sharp (F#). The piece begins with a repeat sign and ends with a double bar line and repeat dots.

*Bourrée 8 (cahier 1 page 3)*

Musical score for Bourrée 8, consisting of two staves of music in 3/4 time. The first staff is in treble clef and the second in bass clef. The key signature has one flat (Bb). The piece begins with a repeat sign and ends with a double bar line and repeat dots.

*Bourrée 9 (cahier 1 page 3)*

Musical score for Bourrée 9, consisting of two staves of music in 3/4 time. The first staff is in treble clef and the second in bass clef. The key signature has one sharp (F#). The piece begins with a repeat sign and ends with a double bar line and repeat dots.

*Bourrée 10 (cahier 1 page 4)*

Musical score for Bourrée 10, consisting of two staves of music in 3/4 time. The first staff is in treble clef and the second in bass clef. The key signature has one flat (Bb). The piece begins with a repeat sign and ends with a double bar line and repeat dots.

*Bourrée 11 (cahier 1 page 4)*

Musical score for Bourrée 11, consisting of two staves of music in 3/4 time. The first staff is in treble clef and the second in bass clef. The key signature has one flat (Bb). The piece begins with a repeat sign and ends with a double bar line and repeat dots. The first ending is marked with a '1' and the second ending with a '2'.

*Bourrée 12 "Chanson auvergnate" (cahier 2 page 1)*

209

Musical notation for Bourrée 12, measures 209-218. The piece is in 3/8 time and B-flat major. The melody is written on a single staff, and the accompaniment is on a second staff. The melody consists of eighth and sixteenth notes, with a repeat sign at the end.

*(un seul dièse vraisemblable)*

Musical notation for Bourrée 12, measures 219-228. The piece is in 3/8 time and C major (one sharp). The melody is written on a single staff, and the accompaniment is on a second staff. The melody consists of eighth and sixteenth notes, with a repeat sign at the end.

*Bourrée 13 (cahier 2 page 2)*

Musical notation for Bourrée 13, measures 229-238. The piece is in 3/4 time and C major. The melody is written on a single staff, and the accompaniment is on a second staff. The melody consists of quarter and eighth notes, with a repeat sign at the end.

*Bourrée 14 (cahier 2 page 2)*

249

258

Musical notation for Bourrée 14, measures 249-258. The piece is in 3/4 time and C major. The melody is written on a single staff, and the accompaniment is on a second staff. The melody consists of quarter and eighth notes, with a repeat sign at the end.

*Bourrée 15 (cahier 2 page 2)*

267

276

Musical notation for Bourrée 15, measures 267-276. The piece is in 3/4 time and B-flat major. The melody is written on a single staff, and the accompaniment is on a second staff. The melody consists of quarter and eighth notes, with a repeat sign at the end.

*Bourrée 16 (cahier 2 page 3) (Fa# probable)*

Musical notation for Bourrée 16, measures 277-286. The piece is in 3/4 time and F# major (two sharps). The melody is written on a single staff, and the accompaniment is on a second staff. The melody consists of quarter and eighth notes, with a repeat sign at the end.

BOURRÉES provenant de cahiers manuscrits trouvés à Combronde  
(datables des années 1920, coll. Éric Coatrieux)

*Bourrée 17 (cahier 2 page 3)*

Two staves of musical notation for Bourrée 17. The first staff starts at measure 321 and ends at 330. The second staff continues from measure 330. The music is in a minor key and features a steady eighth-note melody.

321 *Bourrée 18 (cahier 2 page 4)* (un Sib à la clef est vraisemblablement fautif)

Two staves of musical notation for Bourrée 18. The first staff starts at measure 321 and ends at 330. The second staff continues from measure 330. The music is in a minor key and features a steady eighth-note melody.

339 *Bourrée 19 (cahier 2 page 4)* Sib probable à la clef

Two staves of musical notation for Bourrée 19. The first staff starts at measure 339 and ends at 348. The second staff continues from measure 348. The music is in a minor key and features a steady eighth-note melody.

357 *Bourrée 20 (cahier 2 page 5)*

Two staves of musical notation for Bourrée 20. The first staff starts at measure 357 and ends at 366. The second staff continues from measure 366. The music is in a minor key and features a steady eighth-note melody.

375 *Bourrée 21 (cahier 2 page 5)*

Two staves of musical notation for Bourrée 21. The first staff starts at measure 375 and ends at 384. The second staff continues from measure 384. The music is in a minor key and features a steady eighth-note melody.

*Bourrée 22 (cahier 2 page 6)*

Two staves of musical notation for Bourrée 22. The first staff starts at measure 393 and ends at 402. The second staff continues from measure 402. The music is in a minor key and features a steady eighth-note melody.

BOURRÉES provenant de cahiers manuscrits trouvés à Combronde  
(datables des années 1920, coll. Éric Coatrieux)

410 *Bourrée 23 (cahier 2 page 6)*

420

429 *Bourrée 24 (cahier 2 page 7)*

438

447 *Bourrée 25 (cahier 2 page 7)* *Sib probable à la clef*

456

465 *Bourrée 26 (cahier 2 page 8)* *La partition donne un fa, vraisemblablement par erreur, à la fin de chaque phrase, au lieu du la par lequel je l'ai corrigé.*

474

483 *Bourrée 27 (cahier 2 page 8)* *Sib probable à la clef*

492

*Le rythme de cette bourrée était incohérent et manifestement erroné.  
J'ai ajouté le do des mesures 484 et 488 à titre de proposition pour obtenir une mélodie cohérente.*

BOURRÉES provenant de cahiers manuscrits trouvés à Combronde  
(datables des années 1920, coll. Éric Coatrieux)

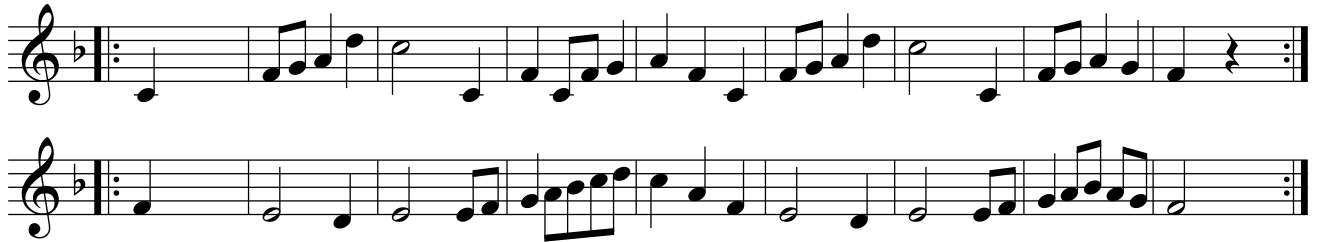
*Bourrée 28 (cahier 2 page 9)*



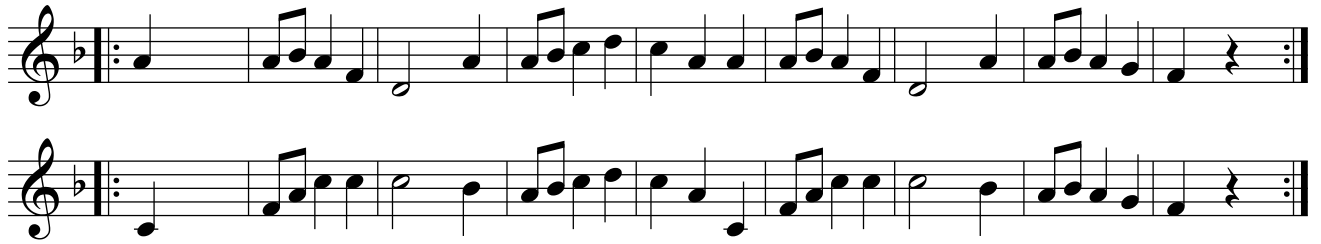
*Bourrée 29 (cahier 2 page 9)*



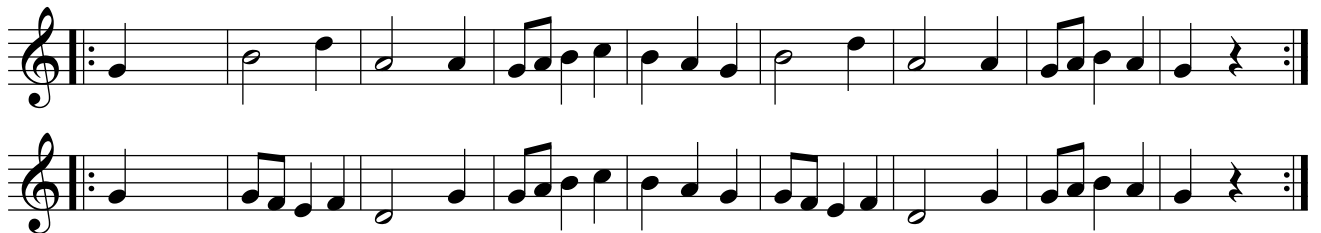
*Bourrée 30 (cahier 2 page 10)*



*Bourrée 31 (cahier 2 page 10)*



*Bourrée 32 (cahier 2 page 11)*



BOURRÉES provenant de cahiers manuscrits trouvés à Combronde  
(datables des années 1920, coll. Éric Coatrieux)

*air sans titre, sans doute pas une bourrée (cahier 2 p.11)*

Musical score for an untitled air, 3/8 time signature, two staves. The music is in B-flat major. The first staff begins with a treble clef and a key signature of one flat. The second staff begins with a treble clef and a key signature of one flat. The number 601 is written below the first staff. The piece concludes with a double bar line.

*Bourrée 33 (cahier 2 page 12)*

Musical score for Bourrée 33, 3/4 time signature, two staves. The music is in B-flat major. The first staff begins with a treble clef and a key signature of one flat. The second staff begins with a treble clef and a key signature of one flat. The piece concludes with a double bar line and the text "autre fin" above the final measure.

*Bourrée 34 (cahier 2 page 13)*

Musical score for Bourrée 34, 3/8 time signature, two staves. The music is in B-flat major. The first staff begins with a treble clef and a key signature of one flat. The second staff begins with a treble clef and a key signature of one flat. The piece concludes with a double bar line.

*Bourrée 35 (cahier 2 page 13)*

Musical score for Bourrée 35, 3/8 time signature, two staves. The music is in B-flat major. The first staff begins with a treble clef and a key signature of one flat. The second staff begins with a treble clef and a key signature of one flat. The piece concludes with a double bar line.

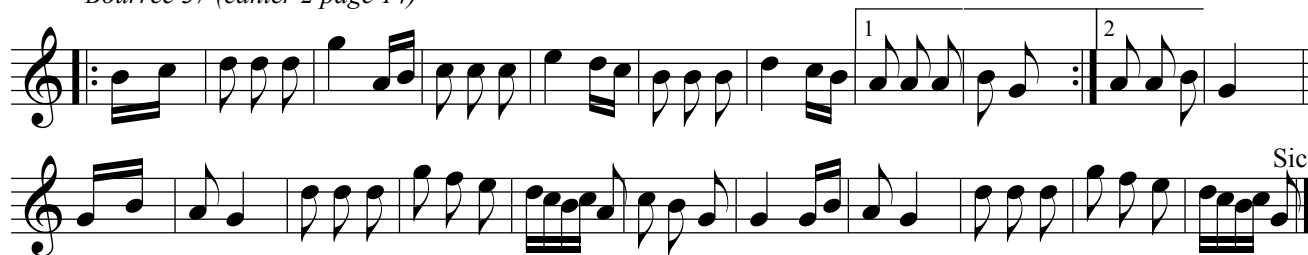
BOURRÉES provenant de cahiers manuscrits trouvés à Combronde  
(datables des années 1920, coll. Éric Coatrieux)

*Bourrée 36 (cahier 2 page 14)*



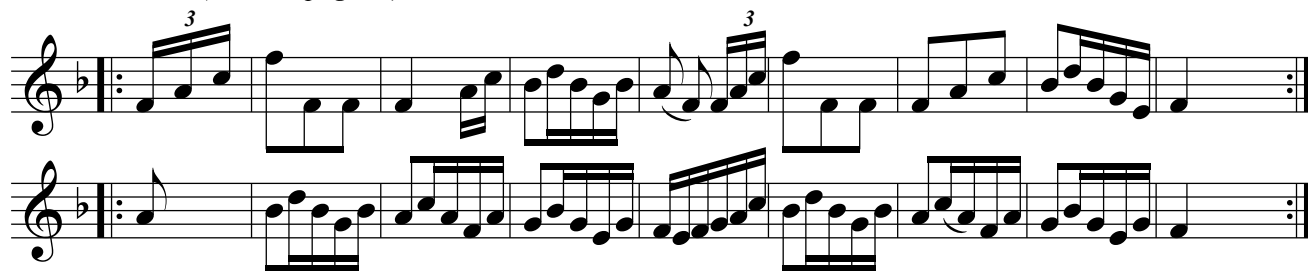
Musical notation for Bourrée 36, consisting of a single staff in treble clef. The piece begins with a repeat sign and a key signature of one flat. The melody features a mix of eighth and sixteenth notes, with some beamed sixteenth notes. The piece concludes with a double bar line and repeat dots.

*Bourrée 37 (cahier 2 page 14)*



Musical notation for Bourrée 37, consisting of two staves in treble clef. The piece begins with a repeat sign and a key signature of one flat. The first staff contains the main melody with first and second endings. The second staff provides a bass line accompaniment. The piece ends with a double bar line and repeat dots. The word "Sic" is written above the final measure of the second staff.

*Bourrée 38 (cahier 2 page 15)*



Musical notation for Bourrée 38, consisting of two staves in treble clef. The piece begins with a repeat sign and a key signature of one flat. The first staff contains the main melody with a triplet of eighth notes. The second staff provides a bass line accompaniment. The piece ends with a double bar line and repeat dots.

*Bourrée 39 (cahier 2 page 15)*



Musical notation for Bourrée 39, consisting of two staves in treble clef. The piece begins with a repeat sign and a key signature of one flat. The first staff contains the main melody with first and second endings. The second staff provides a bass line accompaniment. The piece ends with a double bar line and repeat dots.