

MONTAGNARDES

du recueil de Maurice de Raoulx

"Bourrées d'Auvergne et Montagnardes arrangées pour la flûte"

(Bibliothèque municipale de Clermont-Ferrand,

cote A.10382 - Legs P. Leblanc)

N°39

Two staves of musical notation for N°39. The first staff starts at measure 1 and ends at measure 17. The second staff starts at measure 9 and ends at measure 17. The music is in 3/8 time and features a mix of eighth and sixteenth notes.

N°40

Two staves of musical notation for N°40. The first staff starts at measure 18 and ends at measure 25. The second staff starts at measure 26 and ends at measure 33. The music is in 3/8 time and features a mix of eighth and sixteenth notes.

N°41

Two staves of musical notation for N°41. The first staff starts at measure 34 and ends at measure 42. The second staff starts at measure 43 and ends at measure 51. The music is in 3/8 time and features a mix of eighth and sixteenth notes.

N°42

Two staves of musical notation for N°42. The first staff starts at measure 52 and ends at measure 60. The second staff starts at measure 61 and ends at measure 69. The music is in 3/8 time and features a mix of eighth and sixteenth notes.

N°43

Two staves of musical notation for N°43. The first staff starts at measure 70 and ends at measure 78. The second staff starts at measure 79 and ends at measure 87. The music is in 3/8 time and features a mix of eighth and sixteenth notes, with triplets marked with a '3'.

MONTAGNARDES
du recueil de Maurice de Raoulx (Suite)

88 *N°44*

97

106 *N°45*

115

124 *N°46*

132

140 *N°47*

149

158 *N°48*

166

MONTAGNARDES
du recueil de Maurice de Raoulx (Suite)

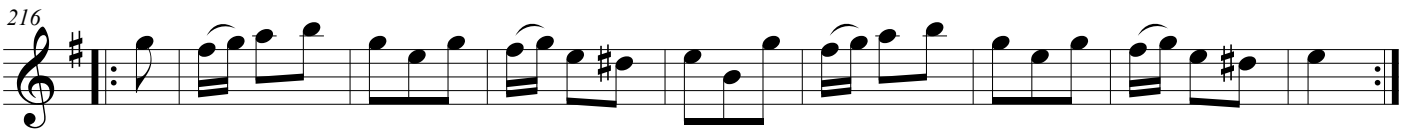
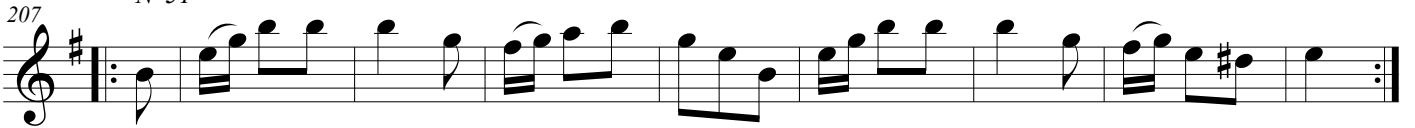
N°49



N°50



N°51



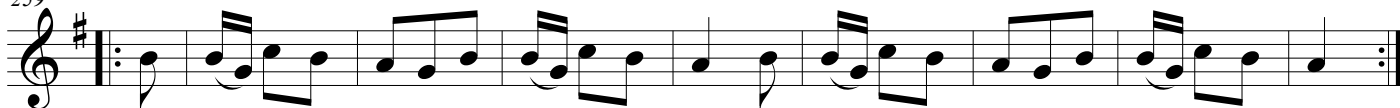
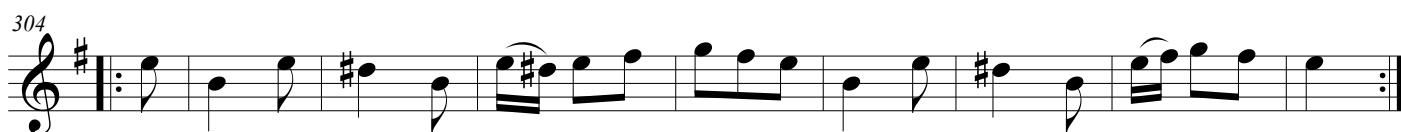
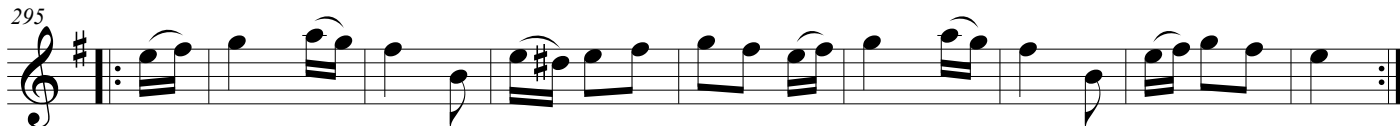
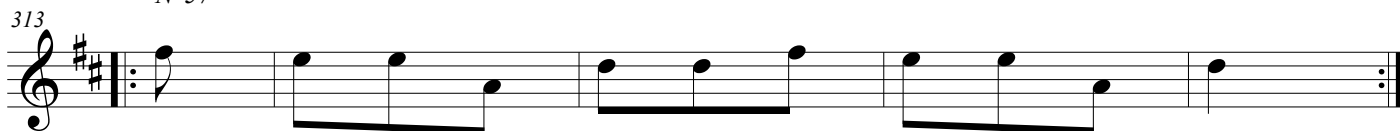
N°52



N°53



MONTAGNARDES
du recueil de Maurice de Raoulx (Suite)

259 *N°54*277 *N°55*295 *N°56*313 *N°57*326 *N°58*

MONTAGNARDES
du recueil de Maurice de Raoulx (Suite)

344 N°59

351

358 N°60

367

376 N°61

385

394 N°62

Erreur d'armure ? Fa# vraisemblable à la clef

403

412 N°63

421