

VERSIONS HISTORIQUES DE LA MÉLODIE "RU TU FLU"

Grande Bourrée (du ballet de 1654) (dans le manuscrit "Airs de ballets et d'opéras (...))



La bourée dartus (sic) (dans "Suite des danses pour les violons et hautbois(...) 1712)



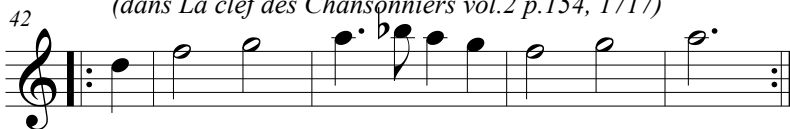
"La Bourée de guilheur esty" (dans le cahier de musique de Claude Redon 1661)

Musical notation for the fifth version of "Ru tu flu", starting at measure 29. It consists of two staves: a treble clef staff and a bass clef staff, both in 7/8 time. The treble staff melody consists of: quarter note G4, quarter note A4, quarter note B4, quarter note C5, quarter note B4, quarter note A4, quarter note G4, quarter note F4, quarter note E4, quarter note D4, quarter note C4, quarter note B3, quarter note A3, quarter note G3, quarter note F3, quarter note E3, quarter note D3, quarter note C3, quarter note B2, quarter note A2, quarter note G2, quarter note F2, quarter note E2, quarter note D2, quarter note C2. The bass staff accompaniment consists of: quarter rest, quarter note G2, quarter note A2, quarter note B2, quarter note C3, quarter note B2, quarter note A2, quarter note G2, quarter note F2, quarter note E2, quarter note D2, quarter note C2, quarter note B1, quarter note A1, quarter note G1, quarter note F1, quarter note E1, quarter note D1, quarter note C1. The piece ends with a double bar line and repeat dots.

Musical notation for the sixth version of "Ru tu flu", starting at measure 35. It consists of two staves: a treble clef staff and a bass clef staff, both in 7/8 time. The treble staff melody consists of: quarter note G4, quarter note A4, quarter note B4, quarter note C5, quarter note B4, quarter note A4, quarter note G4, quarter note F4, quarter note E4, quarter note D4, quarter note C4, quarter note B3, quarter note A3, quarter note G3, quarter note F3, quarter note E3, quarter note D3, quarter note C3, quarter note B2, quarter note A2, quarter note G2, quarter note F2, quarter note E2, quarter note D2, quarter note C2. The bass staff accompaniment consists of: quarter rest, quarter note G2, quarter note A2, quarter note B2, quarter note C3, quarter note B2, quarter note A2, quarter note G2, quarter note F2, quarter note E2, quarter note D2, quarter note C2, quarter note B1, quarter note A1, quarter note G1, quarter note F1, quarter note E1, quarter note D1, quarter note C1. The piece ends with a double bar line and repeat dots.

VERSIONS HISTORIQUES DE LA MÉLODIE "RU TU FLU" (suite)

*"Quelle heure est-il Margot" ou "Il faut toujours aimes, rire & chanter"
(dans La clef des Chansonniers vol.2 p.154, 1717)*



Quelle heure est-il Margot (dans le chansonnier Maurepas)



"Aübado de Sent-Fiacre" ou "Ru tu flu" (Dans le recueil de François Célor)

