

RÉPERTOIRE DE 2005 - ATELIER TOUS INSTRUMENTS

(CRMTL Seilhac)

CD1 - Bourrées à trois temps (pages 1-19)

CD1-01 - Giatte d'Eugène Thomas (Creuse)

9

CD1-02 - Bourrée de François dit "Lilou" Malthieux

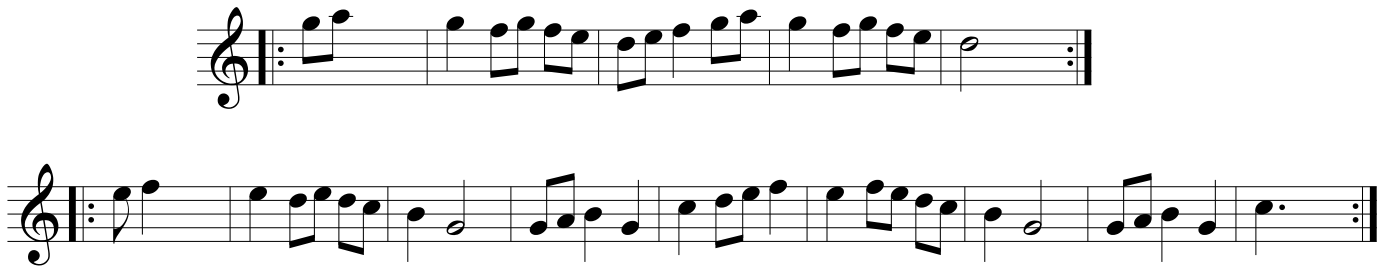
17

CD1-03 - Bourrée "des vieux" (Henri Lachaud)

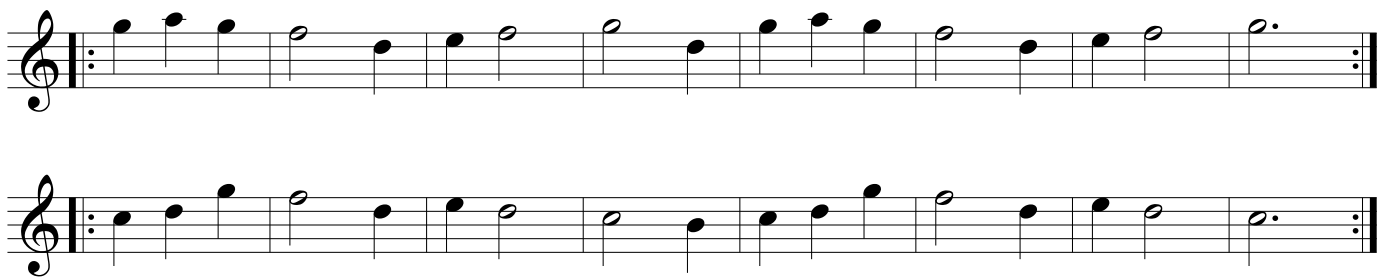
CD1-04 - Bourrée carrée (Henri Lachaud)

2 **RÉPERTOIRE DE 2005 - ATELIER TOUS INSTRUMENTS**
(CRMTL Seilhac) CD1 - Bourrées à trois temps (pages 1-19) Suite

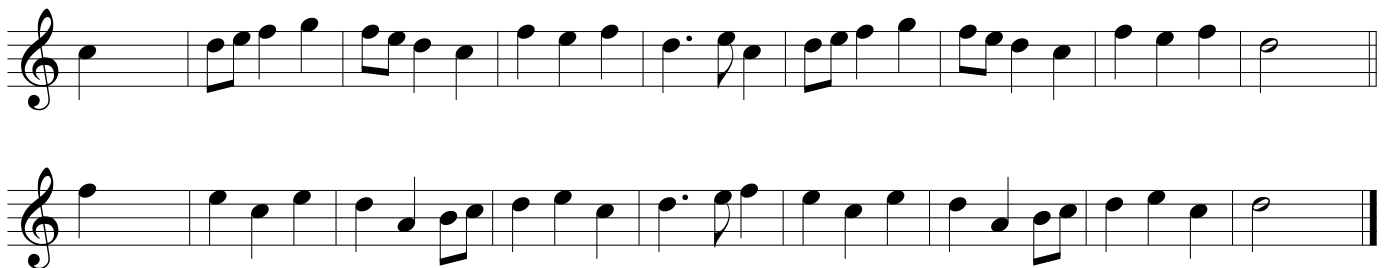
CD1-05 - Bourrée d'Ussel 1 (Jean Ségurel)



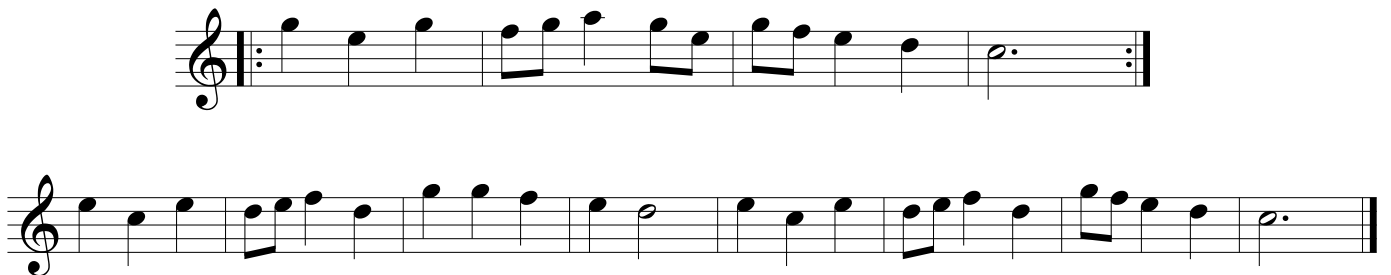
CD1-06 - Quand les moutons sont dans la plaine (Jean Ségurel)



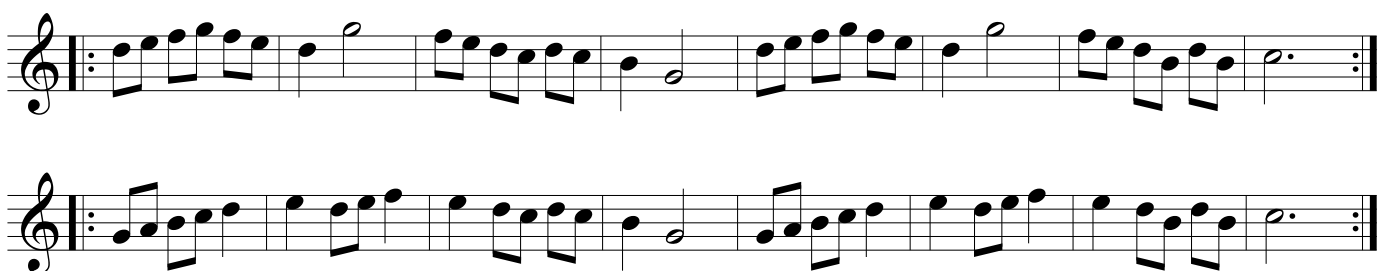
CD1-07 - Bourrée (compo Jean-Marc Delaunay vers 2001-2002?)



CD1-08 - Bourrée 2 : Le petit piaf (compo Jean-Marc Delaunay 18-5-99)



CD1-09 - Bourrée 3 : Pour Yrieix (compo Jean-Marc Delaunay 23-11-98)



RÉPERTOIRE DE 2005 - ATELIER TOUS INSTRUMENTS ³

(CRMTL Seilhac) CD1 - Bourrées à trois temps (pages 1-19) Suite

CD1-10 - Bourrée 4 (compo Jean-Marc Delaunay 23-11-98)

Two staves of musical notation for Bourrée 4. The first staff begins with a treble clef, a key signature of one flat, and a 3/4 time signature. The melody consists of eighth and quarter notes. The second staff continues the melody with similar rhythmic patterns.

CD1-11 - Bourrée de l'hôpital (compo Jean-Marc Delaunay 1997)

Two staves of musical notation for Bourrée de l'hôpital. The first staff starts with a treble clef, one flat, and 3/4 time. It features a melody with eighth and quarter notes, including a repeat sign. The second staff continues the piece.

CD1-12 - Les quatre saisons (compo Jean-Marc Delaunay fév 1997)

Two staves of musical notation for Les quatre saisons. The first staff begins with a treble clef, one flat, and 3/4 time. The melody is composed of eighth and quarter notes. The second staff continues the melody.

CD1-13 - Angelina (Léon Peyrat)

Two staves of musical notation for Angelina. The first staff starts with a treble clef, one flat, and 3/4 time. The melody uses eighth and quarter notes. The second staff continues the piece.


CD1-14 - Bourrée de St-Clément 1 (Léon Peyrat)

203

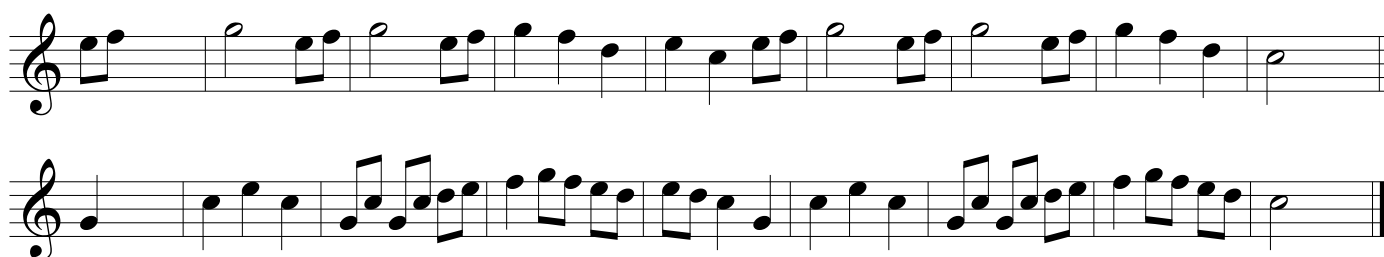
Two staves of musical notation for Bourrée de St-Clément 1. The first staff begins with a treble clef, one flat, and 3/4 time. The melody consists of eighth and quarter notes. The second staff continues the melody.

4 **RÉPERTOIRE DE 2005 - ATELIER TOUS INSTRUMENTS**
(CRMTL Seilhac) CD1 - Bourrées à trois temps (pages 1-19) Suite

CD1-15 - Bourrée de St-Clément 2 "pour l'accordéon" (Léon Peyrat)



CD1-16 - Dins lo vin (Léon Peyrat)

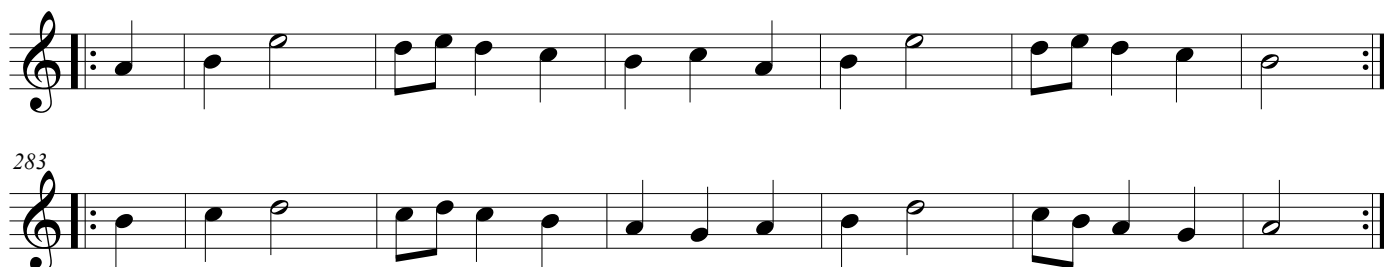


CD1-17 - Totjorn lo torn (recueil Célor, 2e partie compo JMD)



Tot - jorn lo torn La bor - reia vi-ra fi - lhe-ta Tot - jorn lo torn En-que - ra n'es pas jorn

CD1-18 - Tres menetas (recueil Célor, rythme modifié)



CD1-19 - Les cinq noisettes (trad auvergnat et limousin)

