

RÉPERTOIRE DE 2005 - ATELIER TOUS INSTRUMENTS (CRMTL Seilhac)

CD1 - Bourrées à deux temps, sautières, danses collectives (pages 20-40)

CD1-20 - Sautière de Léon Bonis 1



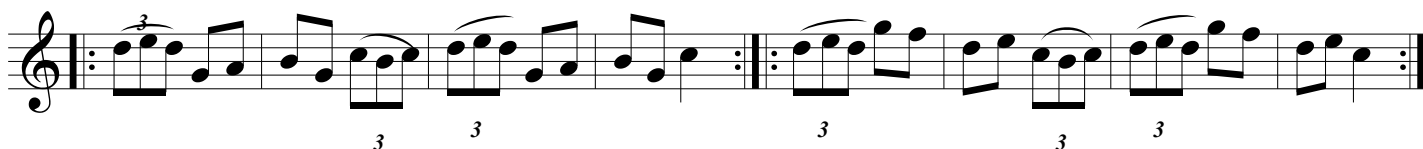
CD1-21 - Sautière de Léon Bonis 2



CD1-22 Sautiera passada (Sautière "passée") de M. Malavial



CD1-23 - Barra l'en clau (Sautière "à suivre" d'Eugène Solomagne)




2 RÉPERTOIRE DE 2005 - ATELIER TOUS INSTRUMENTS
(CRMTL Seilhac) Suite


CD1 - Bourrées à deux temps, sautières, danses collectives (pages 20-40)

CD1-24 - La bergère de Coulandon (Bourrée 2 temps, trad. berrichon)

53

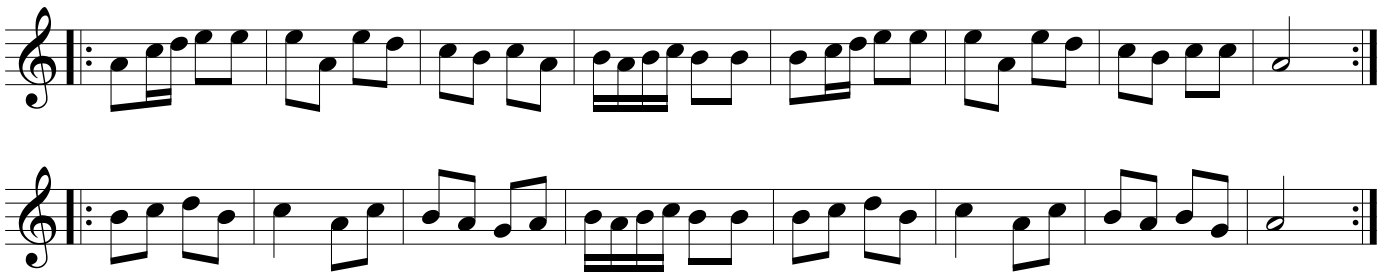


61



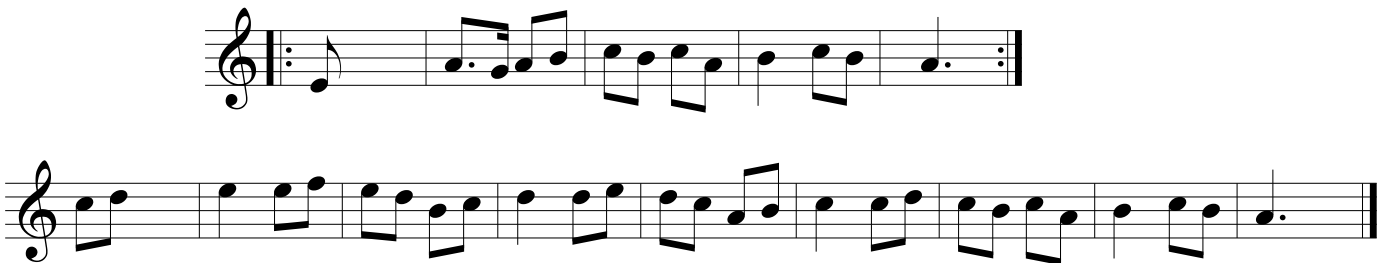
Musical notation for CD1-24, measures 53-68. The piece is in 2/4 time and consists of two staves of music. The first staff starts at measure 53 and ends at measure 60. The second staff starts at measure 61 and ends at measure 68. The music features a mix of eighth and sixteenth notes, with some rests and a final double bar line.

CD1-25 - Bourrée 42 (Manuscrit auvergnat fin XVIIIe siècle) (le sol est diésé à l'origine)



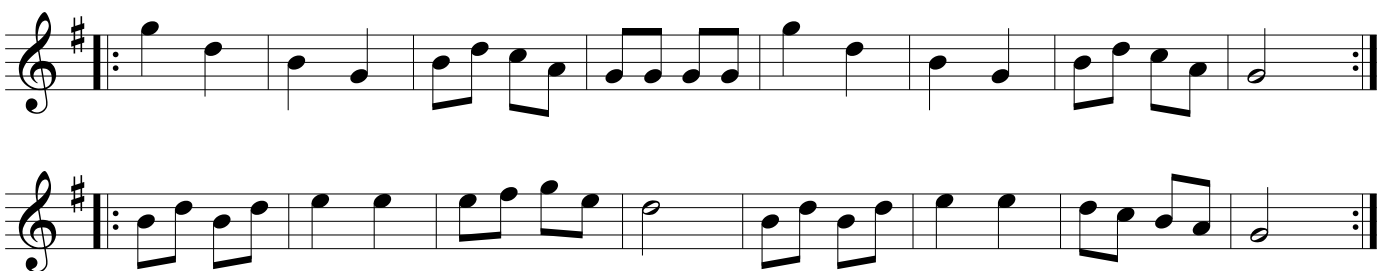
Musical notation for CD1-25, measures 1-16. The piece is in 2/4 time and consists of two staves of music. The first staff starts at measure 1 and ends at measure 16. The second staff starts at measure 1 and ends at measure 16. The music features a mix of eighth and sixteenth notes, with some rests and a final double bar line.

CD1-26 - La negra e lo peulh (Recueil Célor, air de chanson)



Musical notation for CD1-26, measures 1-8. The piece is in 2/4 time and consists of two staves of music. The first staff starts at measure 1 and ends at measure 8. The second staff starts at measure 1 and ends at measure 8. The music features a mix of eighth and sixteenth notes, with some rests and a final double bar line.

CD1-27 - Chas grand Glaudi (Basse-Auvergne, recueil Dauzat)

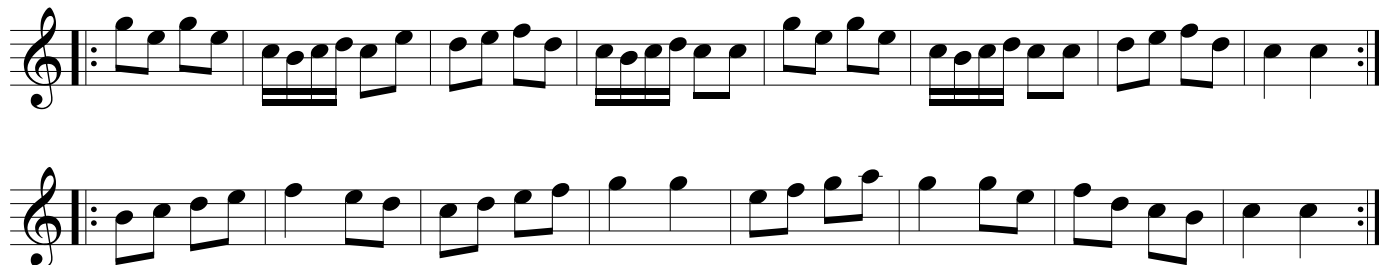


Musical notation for CD1-27, measures 1-16. The piece is in 2/4 time and consists of two staves of music. The first staff starts at measure 1 and ends at measure 16. The second staff starts at measure 1 and ends at measure 16. The music features a mix of eighth and sixteenth notes, with some rests and a final double bar line.

RÉPERTOIRE DE 2005 - ATELIER TOUS INSTRUMENTS ³ (CRMTL Seilhac) Suite

CD1 - Bourrées à deux temps, sautières, danses collectives (pages 20-40)

CD1-28 - Bourrée N°22 (recueil Maurice De Raoulx, début XIXe siècle)



CD1-29 - Bourrée N°7 (recueil Maurice De Raoulx, début XIXe siècle)



CD1-30 - Paubre Jòsep (Cantal, recueil Delzangles)



CD1-31 - Las filhas d'a Treinhac (recueil Célor, N°LXXX)



4 RÉPERTOIRE DE 2005 - ATELIER TOUS INSTRUMENTS
(CRMTL Seilhac) Suite

CD1 - Bourrées à deux temps, sautières, danses collectives (pages 20-40)

CD1-32 - La Belle Julie (Contredanse du XVIIIe siècle,
arrangée d'après le manuscrit Dauterneaux de Lyon)



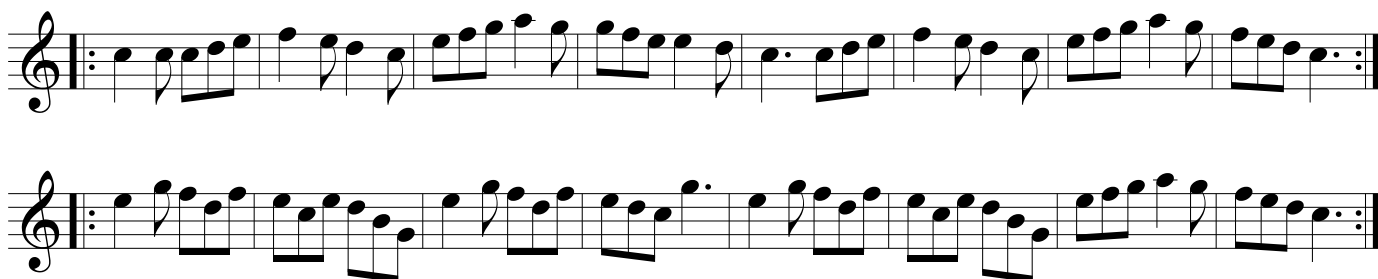
Musical notation for CD1-32 - La Belle Julie. The piece is in 2/4 time and consists of two staves. The first staff begins at measure 177 and ends with a double bar line. The second staff begins at measure 187 and also ends with a double bar line. Both staves feature a melody with eighth and sixteenth notes, and include first and second endings marked '1.' and '2.' at the end of each staff.

CD1-33 - La Parisienne d'Auvergne (Contredanse française du XVIIIe siècle,
arrangée d'après le manuscrit Dauterneaux de Lyon)



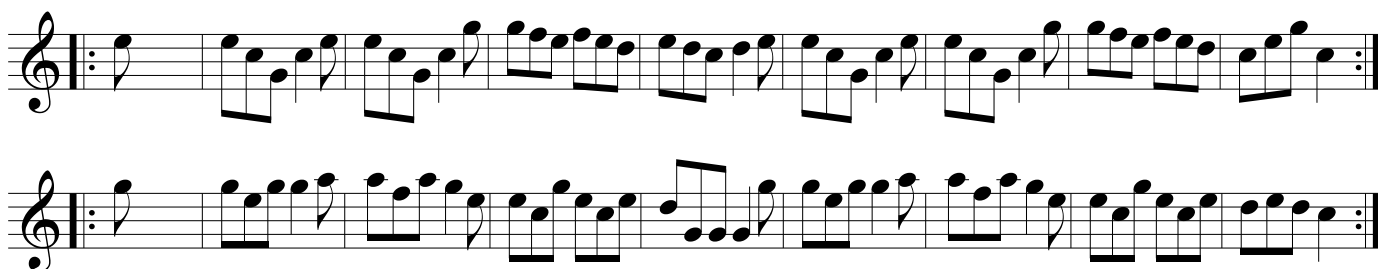
Musical notation for CD1-33 - La Parisienne d'Auvergne. The piece is in 2/4 time and consists of two staves. The first staff begins at measure 196 and ends with a double bar line. The second staff begins at measure 205 and also ends with a double bar line. The melody is characterized by a steady eighth-note pattern.

CD1-34 - Les charmes de l'amour (Contredanse français, arrangée d'après le manuscrit Dauterneaux de Lyon)



Musical notation for CD1-34 - Les charmes de l'amour. The piece is in 2/4 time and consists of two staves. Both staves feature a melody with eighth and sixteenth notes, ending with a double bar line.

CD1-35 - Fanfare de M. Danguy (Musique pour vielle à roue du XVIIIe siècle, arrangée d'après le manuscrit Vibraye)

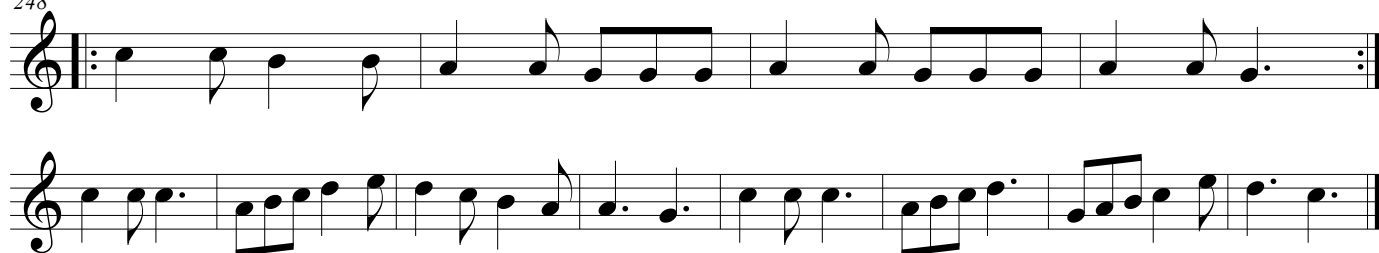


Musical notation for CD1-35 - Fanfare de M. Danguy. The piece is in 2/4 time and consists of two staves. Both staves feature a melody with eighth and sixteenth notes, ending with a double bar line.

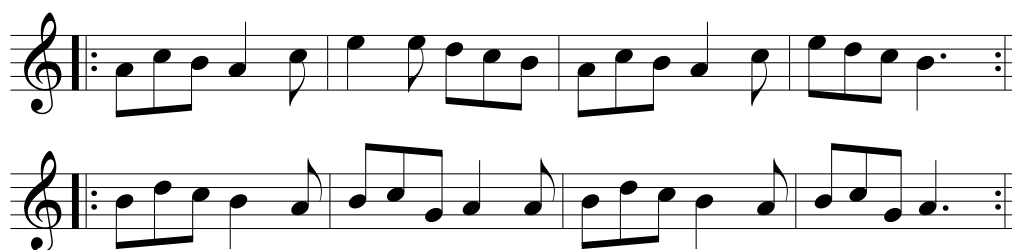
RÉPERTOIRE DE 2005 - ATELIER TOUS INSTRUMENTS ⁵ (CRMTL Seilhac) Suite

CD1 - Bourrées à deux temps, sautières, danses collectives (pages 20-40)

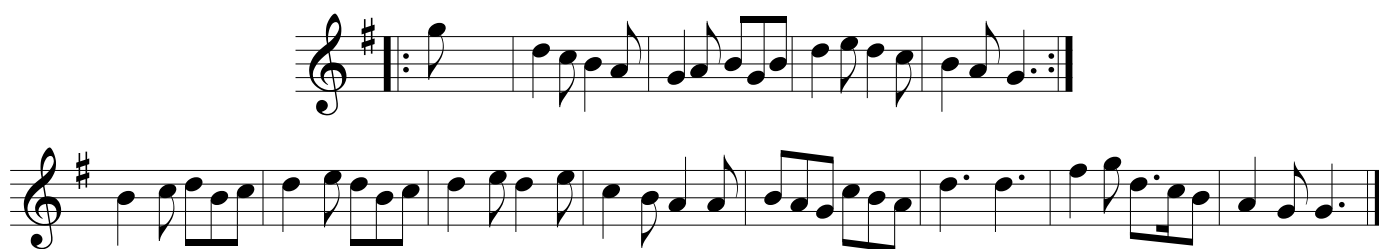
248 CD1-36 - La confession (air de chanson, recueil Célor)



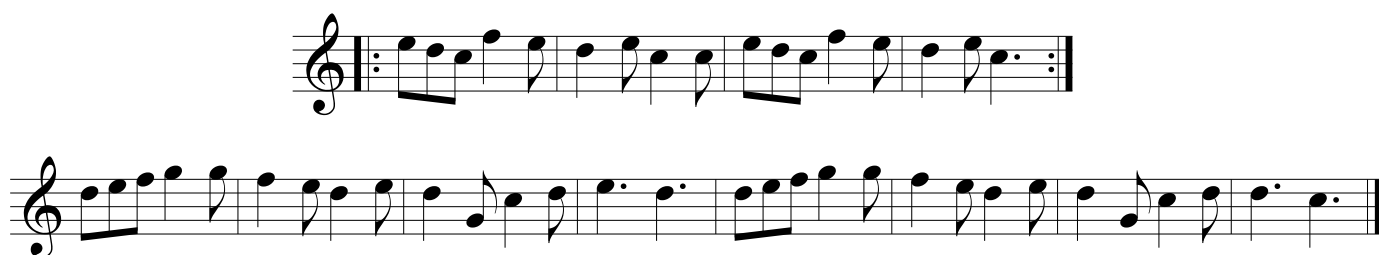
CD1-37 - Quand lo soldard (air de chanson, arrangé d'après le recueil Célor)



CD1-38 - A l'ombre d'un ormeau Lisette (Chanson du début XVIIIe siècle, d'après le recueil du Théâtre de la Foire)



CD1-39 - Une fille sans un ami (Chanson du début XVIIIe siècle, d'après le recueil du Théâtre de la Foire)



CD1-40 - "Notre galère, sans vent contraire" ou Vaudeville du procès des théâtres
(Chanson du début XVIIIe siècle, d'après le recueil du Théâtre de la Foire)

